

RemoteFlight COCKPIT HD



TIPS AND TRICKS

REV 1.1 - 2012-07-08

1. Cockpit Layout

Default layout available in the app corresponds to a „standard six“, but you can re-arrange your cockpit layout to best suit your needs. Not only can you replace each of the gauges with a different one, but you can move the gauges around until you are happy with the layout.

SETTINGS SCREEN

On the Settings screen, tap a gauge panel to enable its controls. Notice that control arrows appear, allowing you to move the panel in a direction that is available for its current position. Tap on the arrow to move the panel in that direction. The two neighbouring panels will then switch their positions. Tap „Done“ to confirm the position.

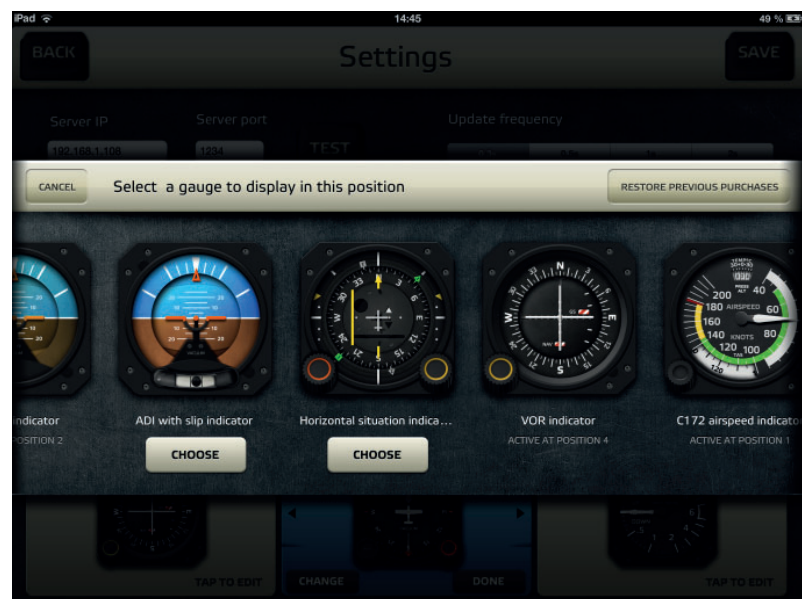


GAUGE PICKER

To change what gauge is actually used, tap „Change“ button. This will open a new window with all available gauges. In this window, you can both purchase alternative gauges and assign those, that are already purchased to the selected position.

Note that get the info about purchasable items and to make the purchase, you need to be connected to the internet. Once the gauge is purchased, internet connection isn't required anymore.

When you are restoring a device, or using multiple devices, use „Restore previous purchases“ to re-enable the gauges on the new or restored device - you only need to sign in with the same Apple ID as when you made the purchase.



2. Gauge Controls

GENERIC AIRSPEED INDICATOR

This gauge is supposed to work as a universal indicator for most planes. With rotary wheel you can adjust the position of all three needles. They don't have any logic in them and are only your visual aids, just like in real life. To change needle position, simply drag and slide your finger up or down from the rotary. Tap on the rotary to change which needle is currently being adjusted - it cycles like this - red > blue > stripped etc.

The speed indicator will remember the needle settings automatically for the next time you run the app.



ALTIMETERS

Both altimeters work pretty much straightforward. Drag and slide over the rotary to change the pressure. You can use the switch at the bottom to switch between inches of mercury and hectopascals.

This switch however doesn't affect your sim settings.



HORIZONTAL SITUATION INDICATOR

The HSI is the most complicated, but probably nicest of all gauges. Using rotaries you can set the omnibearing selector (yellow rotary) and autopilot heading (orange rotary). Drag and slide on the rotaries works here just like anywhere else in the app. With OBS rotary, you can use two fingers to turn the selector faster. Additionally, tapping on the rotary will do precise setting (each tap is one degree), tap on the bottom half to decrease and on the top half to increase.

In each top corner of the gauge, there is a switch that selects mode for directional needles 1 and 2. You can switch between VOR and ADF. Note that the aircraft in the sim must be equipped with ADF2 to actually make the second needle work (not all aircraft are).

On the bottom of the gauge, use the switch to select NAV1 or NAV2 as a mode selector for localizer, GS and OBS.



DIRECTIONAL GYRO

The gyro is pretty simple. Simply drag and slide the orange rotary to change the autopilot heading bug.

The „Push“ button doesn't allow you to set the gyro azimuth, but instead, tapping on that button should reset any gyro drift in the sim.



VOR INDICATOR

This VOR Indicator works similarly to the HSI gauge - use the OBS rotary - drag and slide with one finger for normal precision, drag with two fingers for fast rotation and tap on the top or bottom half to increment or decrement OBS by one degree.

The switch at the bottom also works as expected, allowing you to choose either NAV1 or NAV2 and its respectable nav source and OBS setting.



RPM INDICATOR

Doesn't have any controls but here's just a quick reminder. The RPM indicator will currently work only for piston engines. If you have a single prop aircraft, you will see one needle, if you have two-engine aircraft, you will see two needles with numbers on them.



Other gauges either don't have any controls or they are so easy, that it didn't seem appropriate to even bother you experienced pilots with explaining. Still if you have any questions, write me on support@remoteflight.net and I'll try to help. Also if you have a special gauge request, that you think might be interesting for you and other pilots, please write me as well.